

DLF800IR Thermalgraphic IR Camera

Feature:

Five thermal colors;

Display brightness can be set;

Auto switch off in the reset time;

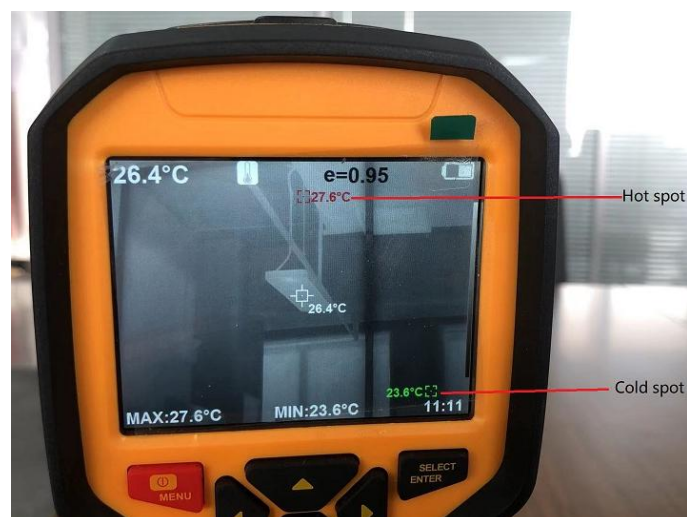
Emissivity can be configured to be 0.01-1.00 for different objects: objects with uneven surface;

($e=0.95$), Semi-matte objects($e=0.85$), semi-gloss objects($e=0.60$), gloss objects($e=0.3$), etc;

Real time temperature output;

Highest temperature and lowest temperature can be displayed;

Measured temperature range: $-20\text{ }^{\circ}\text{C} \sim 550\text{ }^{\circ}\text{C}$;



Specification:

Display	3.5 inch full view TFT
IR Resolution	384×288
Resolution of the display	640×480
Focus length	13mm
Sensitivity	≤60mk@25°C, F#1.0
IR temperature measurement	IR focal plane
Range	-20°C to 550°C (-4°F to 752°F)
Temperature accuracy	±2 % or ±2°C
Spectrum	8~14μm
Frame rate	25Hz (50Hz optional)
Temperature calibration	Automatic, manually
Temperature output	Real time
Thermal color	Rainbow/Iron/cold/white hot/black hot
Image intensification:	Detailed setting
calibration:	shutter
Storage	Built-in 16GB
Document	JPG
Setting	Auto-switch off, date and time, language
Battery	Built-in lithium battery
Working temperature	0°C~6°C
Storage temperature	-20°C~60°C
Dimension	256×97.2×128.9mm
Weight	600g
Protection	IP67
Measured temperature	-20°C~125°C;120°C~550°C;
Battery	4-6 hours

